

PCAR Products



F2 Remote Fob

No Programming needed!

User's Guide

Designed and Engineered by PCAR Products

Congratulations on your new *F2*. In minutes you can create a working backup fob without going through the normal programming process and without needing your PIN code. All you need is the *F2* and any fob currently paired to the car (the "donor").

Before getting started, take a minute to confirm that your donor fob locks and unlocks the car and that it is the same frequency as your *F2*. If you are not sure what your donor frequency is, check the back of the case. OEM fobs marked "RKY116", are 315MHz. Fobs marked "RKY114" are 433MHz.



Open the fob and note the serial number on the back of the circuit board. This number will be useful for ordering a replacement if your *F2* is ever lost or damaged.

CREATING YOUR *F2* BACKUP FOB

Creating your backup is super easy:

- Hold the donor in one hand and the *F2* in the other.
- Press and hold both buttons down.
- Release both buttons when the *F2*'s LED starts flashing.



Your *F2* is ready to use!



Donor

F2

USING YOUR F2

Once created, you can use either the *F2* or the donor, but you must “select” the one you want to use before using it. To select a fob **press it 3 times near the car within 5 seconds**. The car will start responding to it and stop responding to the other one. To switch back, **press the other one 3 times near the car within 5 seconds**.

Think of the *F2* and donor as a “tag team” – one is active, the other is on standby. Practice switching:

- Verify that the donor fob locks and unlocks the car.
- Press the button on the *F2* 3 times near the car.
- Verify that the *F2* locks and unlocks the car.
- Press the donor fob 3 times near the car.
- Verify the donor locks and unlocks the car.

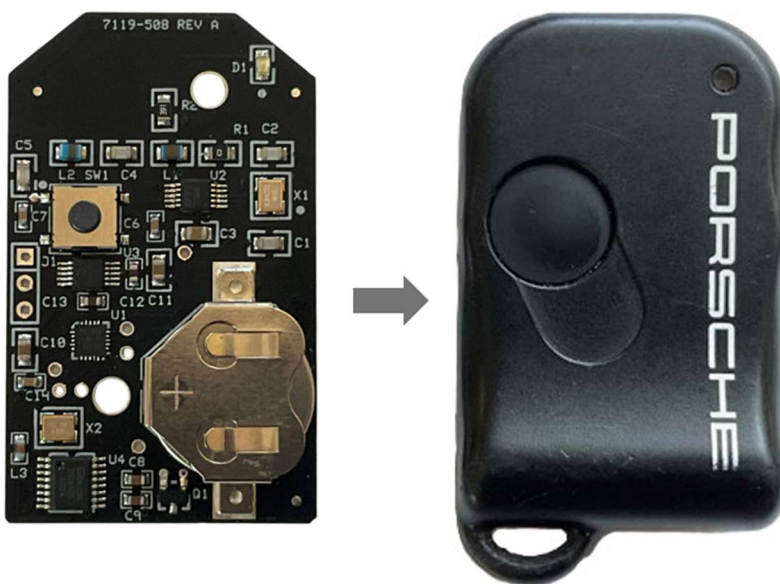


REMEMBER

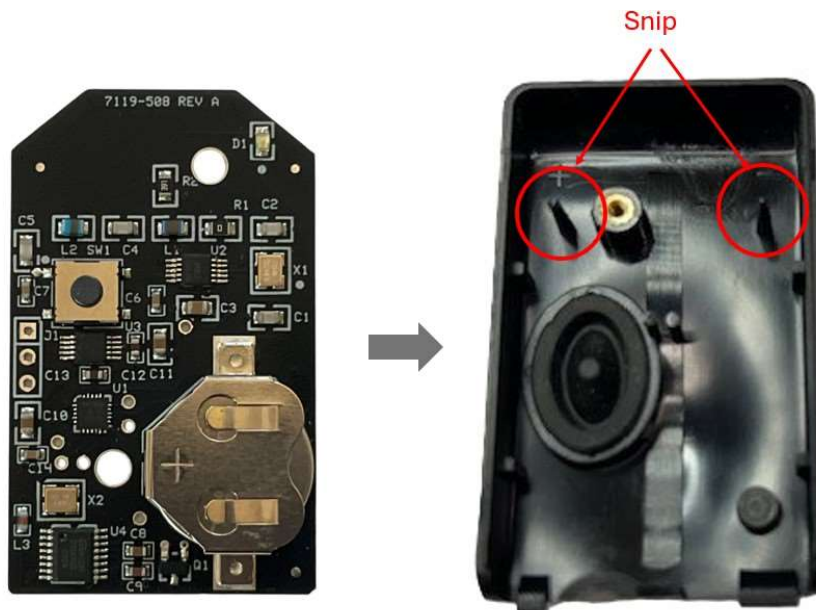
The 3-press procedure is only needed to ***SWITCH*** fobs. Once you switch, the selected fob will lock and unlock the car with a single press until you switch to the other one.

INSTALLATION

Your *F2* comes in a mini fob case that is identical to the Porsche mini case. If you prefer the OEM look, simply install the *F2* circuit board in your Porsche case:



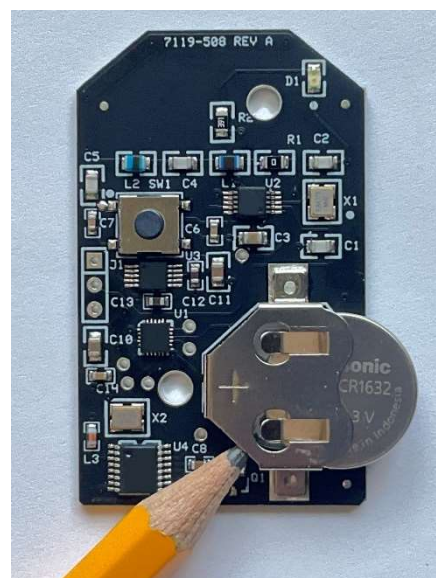
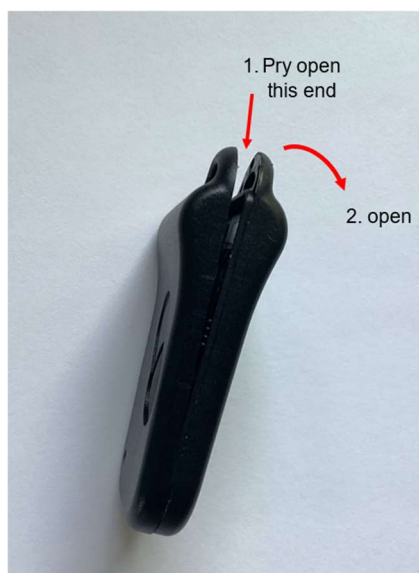
The F2 also fits the OEM switchblade housing. Just snip the two plastic posts off the top cover:



BATTERY SERVICING

The F2 is powered by a CR1632 lithium coin cell. Good quality cells will typically have a 10-yr shelf-life and a capacity for over 30,000 operations. Replace only with name-brand cells (Panasonic, Toshiba, Murata, Energizer, etc.) as lesser-known brands vary significantly in quality and capacity.

To replace the battery, remove the Phillips screw on the back, and use a fingernail to carefully pry the case open at the key ring end:



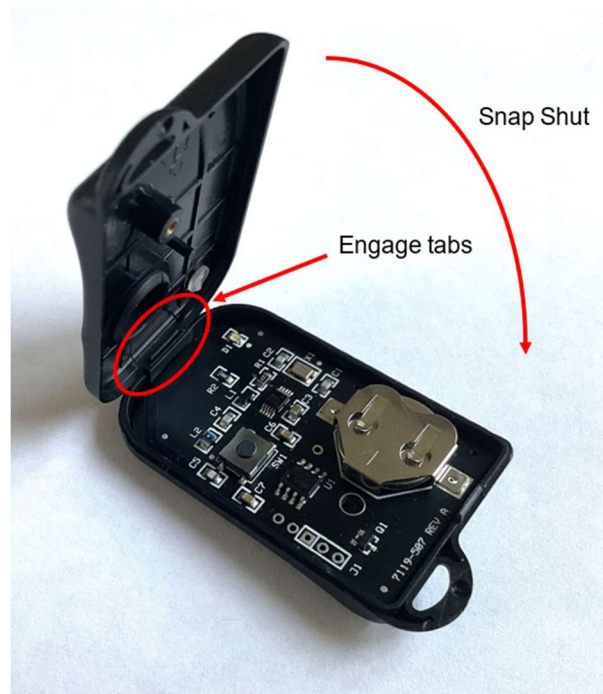
Remove the board from the case and push the battery out. This is a good time to inspect the battery contacts and clean if necessary. Install the new battery **+ side UP**.



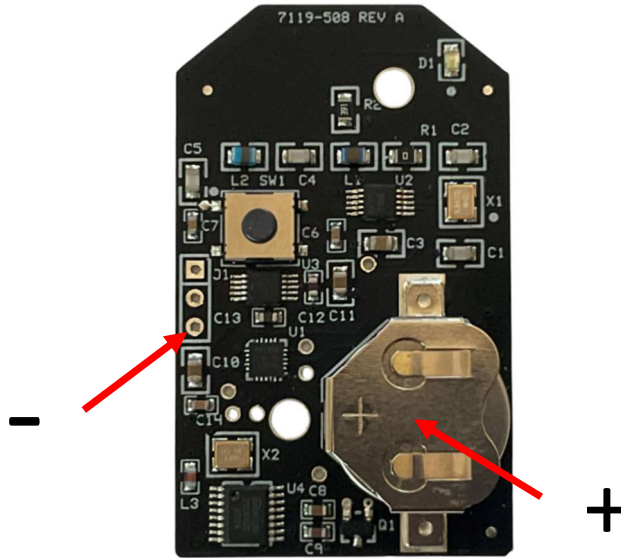
CAUTION

Installing the battery upside down can short it out and reduce its capacity. Although the battery may still work, it is recommended to replace a reversed battery to ensure maximum longevity.

Before closing the case, make sure the LED illuminates when you press the button, then close the case by engaging the tabs, and snap shut. Re-install the screw.



If the LED does not illuminate, check that the battery is good and is installed "+" side up. Note: the fob will work down to 1.8 volts but should be replaced when it gets to 2.0 v. To measure the voltage, probe the key fob as illustrated below while holding the button down.



FOB Range

A common question is, "How far away will my *F2* work?" It's difficult to answer this because range depends on many factors: the fob, the immobilizer, how the fob is held, its orientation to the vehicle, battery condition, surrounding environment, etc.

A more meaningful question is, "How does the *F2* compare to my current fob?" Feedback from users shows that the *F2* *generally operates at a greater range than OEM fobs* and up to four times further than a competing aftermarket fob. We would love to hear your results.

TROUBLESHOOTING

The *F2* is reliable and easy to use. If setup fails or the *F2* stops working, it's usually battery related. Refer to BATTERY SERVICING before troubleshooting further.

Q: When I tried to make my *F2* backup, the *F2* LED stayed on and never flashed.

A: Reasons:

1. The donor may not be transmitting or is transmitting too weak of a signal. Make sure the donor fob locks and unlocks the car. If the car does not respond to the donor, the *F2* won't either. Check the donor battery and contacts.

2. The donor may be transmitting at a different frequency. Make sure the donor fob frequency matches the frequency of your *F2*. OEM fobs marked "RKY116" transmit at 315MHz. Those marked "RKY114" transmit at 433MHz.

Q: When I tried to make my *F2* backup, its LED turned off after only 5 seconds.

A: This indicates you have reached the allowable limit of the number of backups you can make. If this happens, you can still pair the *F2* to the car using the factory programming procedure.

Q: The backup procedure completed ok, but the *F2* doesn't lock or unlock the car.

A: Reasons:

1. The *F2* has not been "selected" as the active fob. **Press it 3 times near the car within 5 seconds and try again.** Make sure each press is at least 1 second long, and that all 3 complete within 5 seconds.
2. The donor that the *F2* was created from is not paired to the car. Retry with a fob that is paired to the car.
3. The *F2* battery is weak (see BATTERY SERVICING)

FAQs

Q: Which Porsche fobs is the *F2* compatible with?

A: The 315MHz *F2* is backwards compatible with Porsche fob P/N 993.618.259.02, and the 433MHz *F2* is backwards compatible with Porsche fob P/N 993.618.259.01.

Q: Does the donor have to be a Porsche OEM fob?

A: No. Any 993-compatible fob operating at the same frequency as the *F2* can be a donor fob, but it must have been previously paired to the immobilizer using the factor procedure.

Q: After I create my *F2* backup, can I change my mind and backup a different fob?

A: Yes. You can back up as many fobs as you like, even fobs that are paired to a different 993. Keep in mind that each time you create a backup, the *F2* forgets the information it got from a previous donor.

Q: What if I don't have a fob that is paired to the car to use as a donor?

A: The *F2* can always be paired to the car using the in-car programming procedure.

Q: If I have multiple fobs already paired to the car, will the "non-donor" fobs be affected in any way?

A: No. Any other fobs paired to the car will not be affected by the *F2* and will continue to function like they did before the *F2* was added.

Q: Can I use the *F2* to replace a fob that I take out of service?

A: Yes. Backup the fob you want to replace, then select the *F2* using the 3-press procedure. If you take the donor out of service, the 3-press procedure will never be needed again.

Q: I currently have more than one fob paired to the car. Can I create an *F2* backup for each of them?

A: Yes. But each *F2* must be created from a different donor. This means as many as eight fobs can be paired to the car (4 donors, 4 *F2*'s).

Q: If the fob I am using as my primary (donor or *F2*) is lost or stops working, will the other one still work?

A: Yes. You can always switch to the other fob by pressing it 3 times near the car.

Q: Can an *F2* back up another *F2*?

A: Yes, with some caveats. If the *F2* you want to use as a donor for another *F2* previously backed up another of your fobs, you will need to take the original donor out of service. Once you do that, your first *F2* will be like any other fob and can be used as a donor, but instead of holding both buttons down for the 10 seconds from start to finish, you will need to press and hold the new *F2* for at least 5 seconds BEFORE pressing the donor *F2*. See next FAQ for a better way to add multiple *F2*'s.

Q: Can I make more than one backup *F2* from a single donor?

A: If you would like to do this, let us know at time of purchase and we can provide you with a special set of two *F2*'s that can back up a single donor.

Q: How can I tell what frequency fob I need?

A: Check the label on the back of your fob. If it says "RK116" or "RKY116" you have a 315MHz system. If it says "RK114" or "RKY114" you have a 433MHz system. Some fobs don't have a label. If that's the case, open the fob and look at the label on the small metal can. On 315MHz fobs it will normally be labeled "R2622". The can on 433MHz fobs will normally be labeled "R2632". If you have any questions, let us know.

315 MHz
fobs:
usually
labeled
"R2622"

433 MHz
fobs:
usually
labeled
"R2632"



Determining fob frequency

Comments? Questions? Drop us a line: support@EZIMMOBLOCK.com. Or call: 860-271-1826